



Technical Bulletin: Hub Identification

BPW have introduced 3 generations of BPW ECO Plus axles over the past eleven years.

1. The first BPW ECO Plus axles were 9 ton axles. (2002)
2. The next was BPW ECO Plus 2 axles, also 9 ton axles. (2008)
3. Most recent was the BPW ECO Plus, 10 ton axles. (2011)

The BPW ECO Plus 10 ton axle was introduced due to the market demand for a more robust, 10 ton axle to run on dual wheel applications.

Single Wheel application: HSF 9010-15 ECO Plus 2

Dual Wheel application: HZF 10110-15 ECO Plus

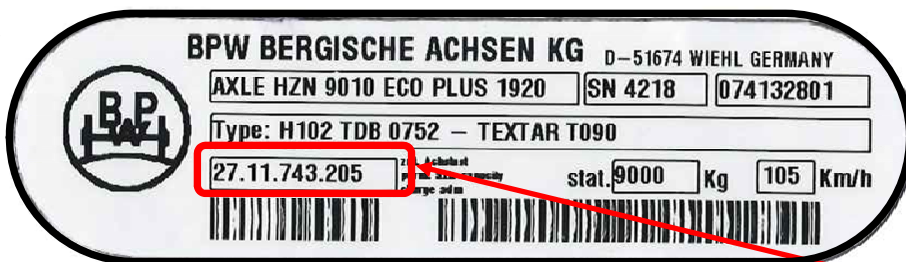
With the different axle generations available in the market, BPW have compiled this guideline to assist in identifying the applicable axles.

There are 3 basic ways for identification, i.e.:

1. Axle Name Plate Identification
2. Hub Identification
3. Axle Stub Identification

1. Axle Label:

ID	ECO Plus 9t	ECO Plus 2 9t	ECO Plus 10t
Part Number	26.11.743.xxx – Steering axles 27.11.743.xxx – Rigid Axles	26.58.743.xxx – Steering axles 27.58.743.xxx – Rigid Axles	27.50.743.xxx – Rigid Axles



Part Number



Static Carrying Capacity



Description e.g.:
HSF = Single Wheels
HZF = Dual Wheels
9010 = 9t
10110 = 10t

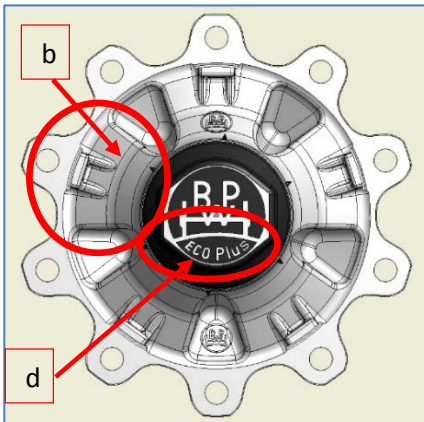
2. Hub Identification

ECO Plus 9t

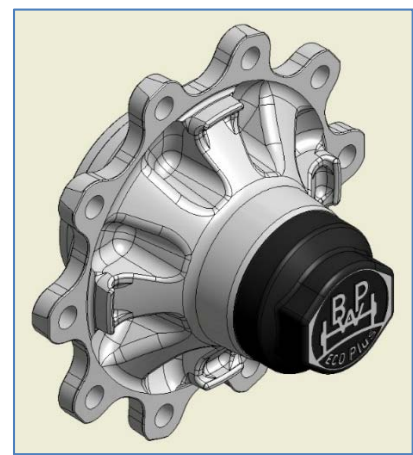
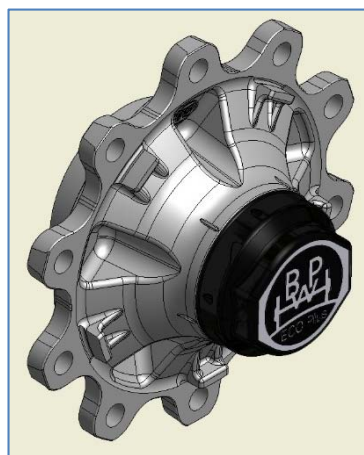
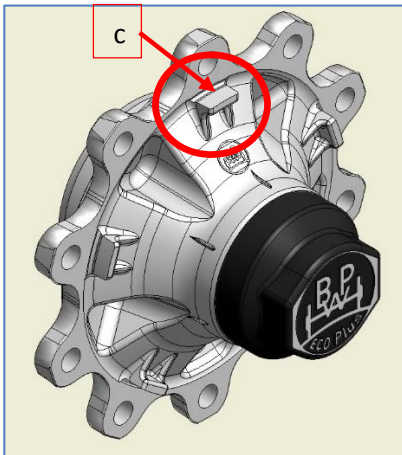
ECO Plus 2 9t

ECO Plus 10t

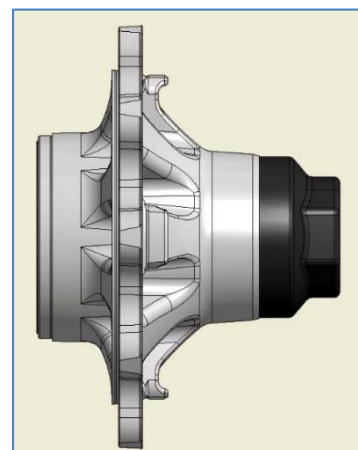
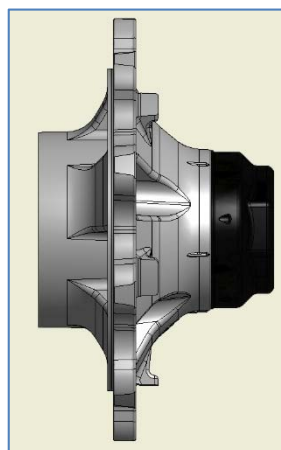
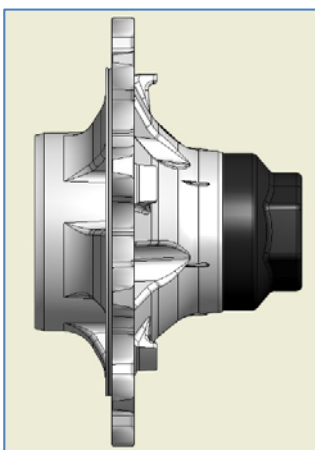
Front View:



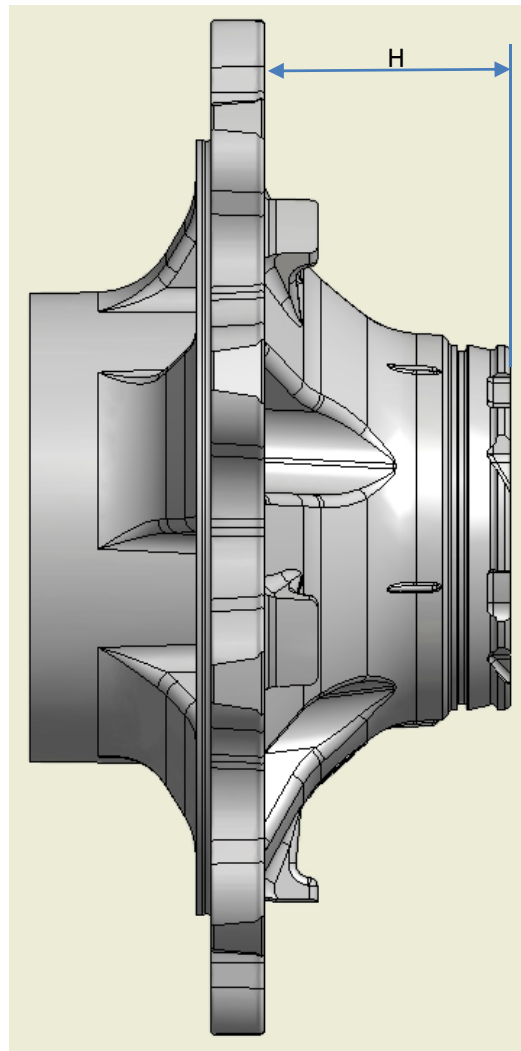
Isometric View:



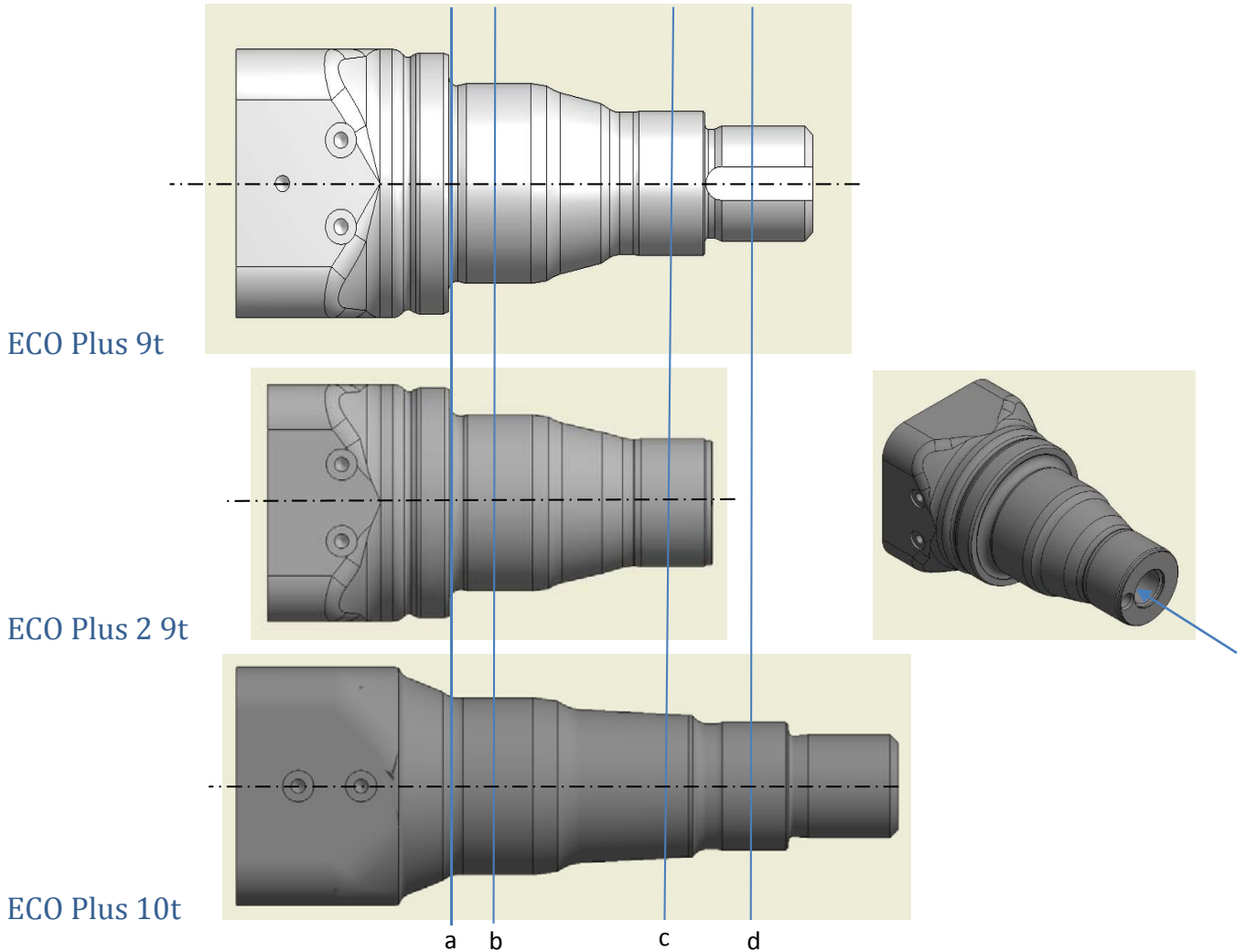
Side View



ID	ECO Plus 9t	ECO Plus 2 9t	ECO Plus 10t
a)	Casting Part number: 01.272.43.19.0	Casting Part number: 01.272.43.30.0	Casting Part number: 01.272.48.95.0
b)	Five wide spokes	Five wide spokes	Eight narrow spokes
c)	Five narrow spigots	Five narrow spigots	Four wide spigots
d)	"ECO Plus" written in a curve on the hub cap	"ECO Plus" written in a straight line on the hub cap	"ECO Plus" written in a curve on the hub cap
e)	Screw-on hub cap Spanner Width = 110mm	Bayonet/Clip-on hub cap Spanner Width = 120mm	Screw-on hub cap Spanner Width = 110mm
f)	Low height hub design H = 92 mm	Low height hub design H = 92 mm	Higher hub design H = 115.5 mm
g)	ABS Ring – Bayonet style	ABS Ring – Bayonet style	ABS Ring – Press-on
h)	Hub part number: Single Wheels/Dual Steel Rim – 03.272.43.10.2 Dual Wheel Aluminium Rims – 03.272.43.19.2 (Longer spigot)	Hub part number: Single Wheels/Dual Steel Rim – 03.272.43.29.0 Dual Wheel Aluminium Rims – 03.272.43.30.0 (Longer spigot)	Hub part number: All configurations – 03.272.43.23.2
i)	Hub assembly part number: Single Wheels/Dual Steel Rim – 09.801.06.07.0 Dual Wheel Aluminium Rims – 09.802.99.74.0	Hub assembly part number: Single Wheels/Dual Steel Rim – 09.801.07.35.0 Dual Wheel Aluminium Rims – 09.801.07.44.0	Hub assembly part number: All configurations – 09.801.06.08.2



3. Axle Stub Identification:



ID	ECO Plus 9t	ECO Plus 2 9t	ECO Plus 10t
1)	Integrated thrust collar (a)	Integrated thrust collar (a)	Conical thrust collar seat (a) Loose conical thrust collar
2)	Bearing: Inner – 33118 Outer – 33213	Bearing: Inner – 33118 Outer – 33213	Bearing: Inner – 33118 Outer – 33213
3)	Narrow bearing spacing design (b→c)	Narrow bearing spacing design (b→c)	Wide bearing spacing design (b → d)
4)	Axle NUT thread - External - M52 x 2	Axle BOLT thread: - Internal - M32 x 2	Axle NUT thread - External - M52 x 2
5)	ABS bracket mounting holes square to the centreline	ABS bracket mounting holes square to the centreline	ABS bracket mounting holes in-line with the centreline

Please note:

The same changes have been made for the KHZ range of axles: (8 stud KH Axles for 19.5" wheels)

KHZF 9008-15 ECO Plus → KHZF 9008-15 ECO Plus 2 → KHZF 11008-15 ECO Plus

For more information please contact BPW:

bpwsales@bpw.co.za or (011) 681 3300